



Bledington Primary School



BEHAVIOUR POLICY

| | | |
|--|--|---|
| Date of Ratification: 09.09.2015 14.07.22 18.01.24 28.01.26 | Updated <i>19.05.16</i> <i>07.02.18</i> <i>20.05.20</i> <i>03.07.22</i> <i>01.01.24</i> <i>14.01.26</i> | Signed: COHEADTEACHERS   Ms J Kewley Mrs A Ziebeck |
|--|--|---|

Safeguarding Statement

At Bledington Primary School we respect and value all children and are committed to providing a caring, friendly and safe environment for all our pupils so they can learn, in a relaxed and secure atmosphere. We believe every pupil should be able to participate in all school activities in an enjoyable and safe environment and be protected from harm. This is the responsibility of every adult employed by, or invited to deliver services at Bledington Primary School. We recognise our responsibility to safeguard all who access school and promote the welfare of all our pupils by protecting them from physical, sexual and emotional abuse, neglect and bullying.

Please read this policy in conjunction with our SEN, Child Protection and Safeguarding, Care and Control, Relationships and Health Education, Health and Safety and Emotional, Mental Health and Well-being policies.

All our policies can be found at <https://www.bledington.gloucs.sch.uk/policies/>

BEHAVIOUR POLICY

INTRODUCTION:

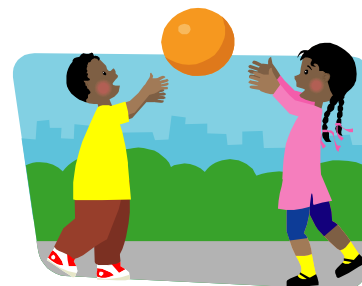
This Policy is built on the reinforcement of positive behaviour. It is consistently applied and staff will use their professional discretion and a range of strategies to achieve this. **ALL STAFF** have a duty to intercede where they hear or see any kind of inappropriate comment or action. Children are encouraged as individuals to develop a sense of responsibility and respond to appropriate challenges.

AIMS:

- To promote self-discipline and a proper regard for authority.
- To encourage good behaviour and respect for others, regardless of their age, culture, gender, ability, appearance or beliefs.
- To ensure pupils' standard of behaviour is acceptable.
- To regulate pupils' conduct.
- To ensure that pupils are aware that ANY kind of bullying, teasing or name calling is totally unacceptable.

EXPECTATIONS OF CHILDREN:

- We accept responsibility for our own behaviour.
- This is our school; we look after it and the people inside it.
- We are considerate, caring and tolerant of each other.
- We accept that others may come from different kinds of families and may have different beliefs and opinions than us.
- We treat the environment with care and respect.
- We treat others as we want them to treat us.
- We treat other people's property carefully.
- We take pride in the way we look.
- We take pride in the way that we speak.



BEHAVIOUR WITHIN SCHOOL:

- We show respect for people and property.
- We are polite to all adults and other pupils.
- We act courteously and responsibly towards all members of the School.
- We move within the School with care and consideration for the building and the people in it.
- We know what is expected of us at certain times of the day and for particular activities.
- We make 'Assembly' time quiet and thoughtful.
- We use the toilets properly and keep them in good order.
- We eat our lunch sensibly.
- We keep the floors clean and tidy so that they are safe places to walk.
- We always walk into and inside the building.
- We look after children who need extra help.



BEHAVIOUR IN THE CLASSROOM:

- We listen carefully
- We remember our own responsibilities towards ourselves and towards each other
- We control our feelings.
- We recognise **all** achievements - our own and others
- We do our best in all activities.
- We settle down to our own work, letting others do their work.
- We look after our classroom, including all equipment.

BEHAVIOUR WITHIN THE SCHOOL GROUNDS:

Areas around the School should be clean, attractive and safe.

- We play games with consideration for others.
- We stand still and listen when requested.
- We only use play equipment provided in the playground.
- We use the seats provided for sitting down. These are left in place.
- We pick up litter and take care of the environment.
- We talk to a buddy when we need help.
- We talk to an adult when a buddy can't help.
- We only use the climbing equipment and forest area after asking and receiving permission.

BEHAVIOUR ON VISITS:

- We listen carefully to instructions and carry them out considerately.
- We stay in our places when travelling on coaches.
- We are polite and considerate to other people.
- We take pride in our appearance when out of School during school hours.
- We are proud to belong to Bledington Primary School.

CELEBRATION OF GOOD WORK / BEHAVIOUR:

- Whole school house point system – four teams – the house points are collated and the highest score is announced as the winning house - termly cup with House ribbons added.
- Lining up points – the class who have lined up the best during the week are rewarded during the weekly Celebration Assembly and earn 10 minutes extra play.
- Each class has a Bronze/Silver/Gold Move Up Chart- through out the week, pupils aim to get to the Gold mark. Adults will recognise great behaviour and ask pupils to move their name up. Equally, poor behaviour is recognised and pupils may be asked to move down the chart. Gold certificates are highly prized.
- Throughout the School, we encourage children by using a system of praise and reward.
- Children may be sent to another teacher or the headteacher to show their good work.
- Any child taking part in out of school activities will share their successes with others.
- Certificates will be given for participation in sporting / musical events etc.
- At the weekly Celebration Assembly, their class teacher, lunchtime supervisors and the head teacher, award a certificate to children who have behaved well or completed a good piece of work.
- The best table in the Lunch Hall is rewarded weekly with the TOP TABLE award-red tablecloth, red cutlery and plates. Top Table Tiger will sit on their table during the week.

SANCTIONS

Step 1 – The child is given an informal warning. This ‘may’ include giving clear direction on **what** behaviour is inappropriate and **why** it is inappropriate. Pupil will move their name down on the class chart.

Step 2 - The child is given a formal warning. This includes giving clear direction on **what** behaviour is inappropriate and **why** it is inappropriate. The child should recognise the behaviour and **apologise** at this stage.

Step 3 - Time Out - five minutes - The child should recognise the behaviour and **apologise** at this stage.

Step 4 - If the child’s behaviour is still inappropriate or the initial behaviour is repeated then they are referred to the Headteacher (Name recorded on behaviour record)

If a child demonstrates violence or aggression toward another, the child may be referred directly to the Headteacher.

Step 5 - If a child is referred to the Headteacher more than once within a week they may contact the parents to discuss the behaviour issues.

Any further action after step 5 will be made depending upon the circumstances of each case.

The Headteacher may decide that exclusion is appropriate in accordance with the Education Act 2011



Bullying will be dealt with very seriously and parents will be invited to discuss the matter.
(See Anti-Bullying Policy)

It is always made clear to the children that it is their behaviour that is unacceptable, not them.

Written 09.09.2015

Updated every two years

